

EW_Drift Storm Campaign 29 Set – 01 Oct 2016 Report

This is an analysis of RTIs during EWDrift campaign from September 29 to October 1 2016. We show the RTIs and results.

EW_DRIFT:

September 29:

- _ Start the campaign from 11:00 hours.
- _ 10:30 Start campaign there was a delay due to problems with acquisition PC.
- _ 19:30 Black out
- _ No Spread F
- _ % Operation/19h: 86.81
- _ Interference is still present, doesn't permit a correct estimation of Drifts.

Log:

- _ 29 Sep 11:00 Start campaign.
- _ 29 Sep 19:30 Blackout

Staff in charge

08-20: I. Manay, 20-00 A. Valdez.

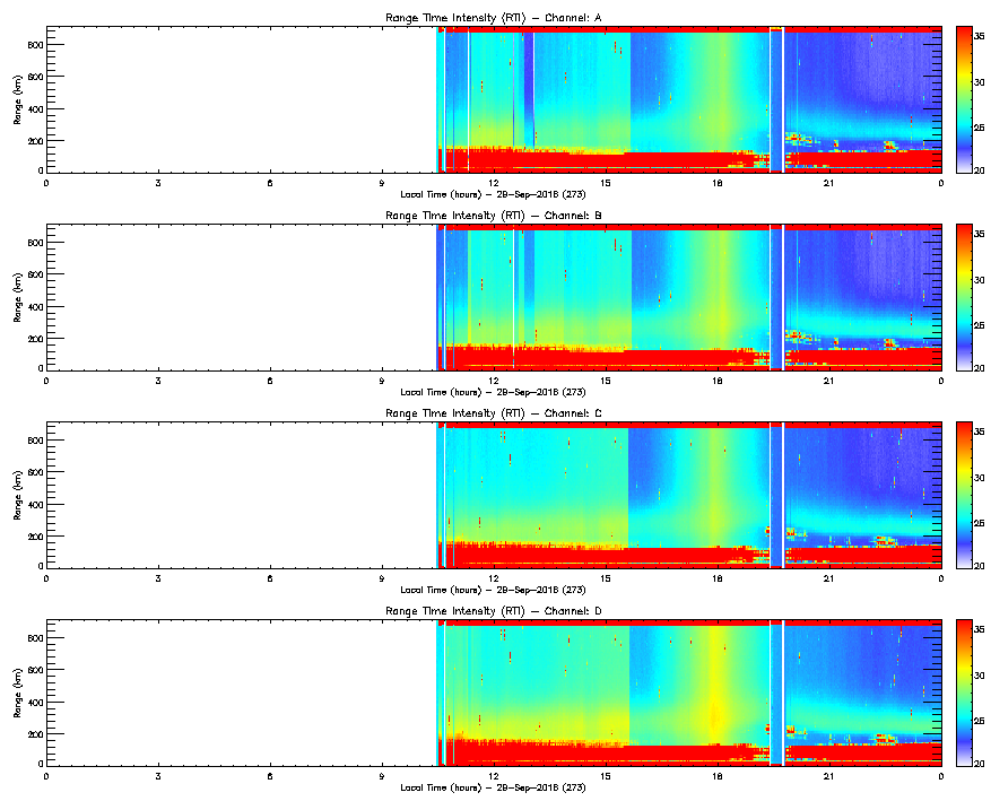


Figure 1. RTI EW_DRIFT 2016-09-29

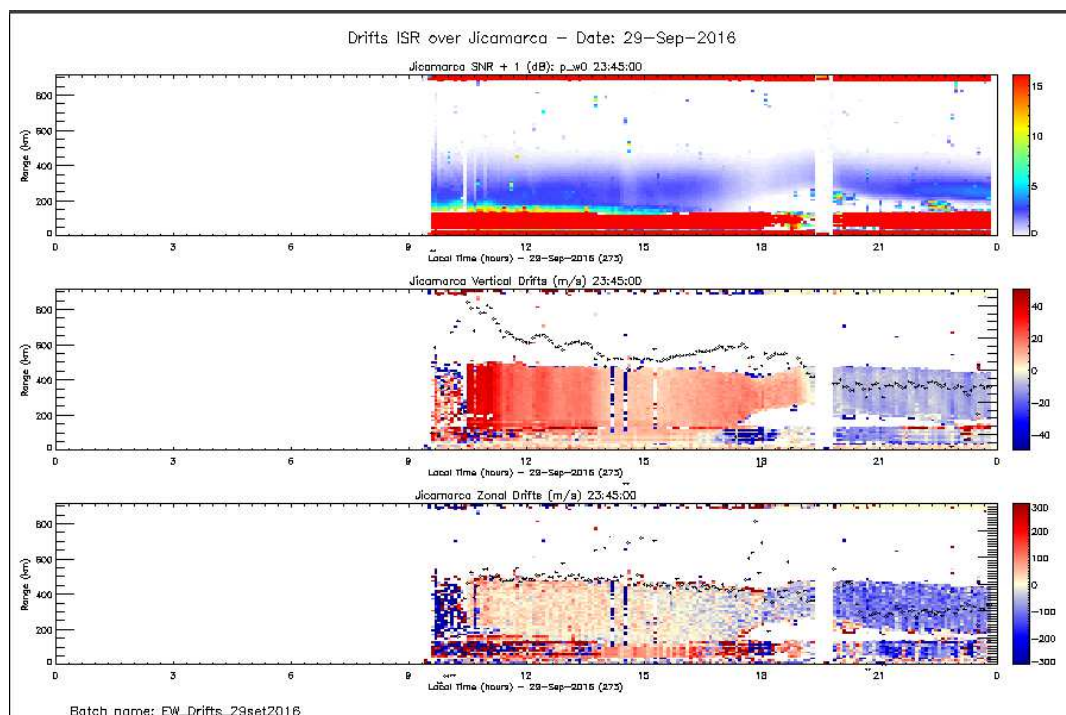


Figure 2 EW_DRIFT 2016-09-29.

September 30:

_ 10 minutes cut due to blackout.

_ Small Spread F

_ % Operation/19h: 86.81

Log:

_ 30 Sep 05:30 Blackout.

Staff in charge

00-08: A. Valdez, 08-20 P. Condor, 20-0 A. Belleza.

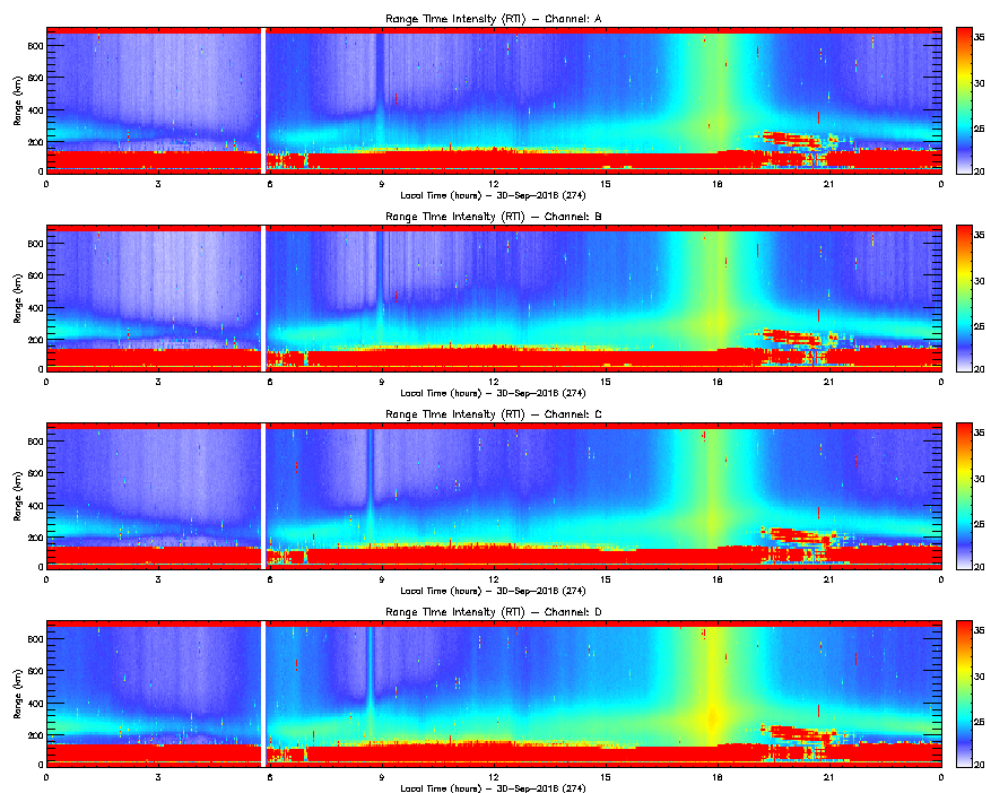
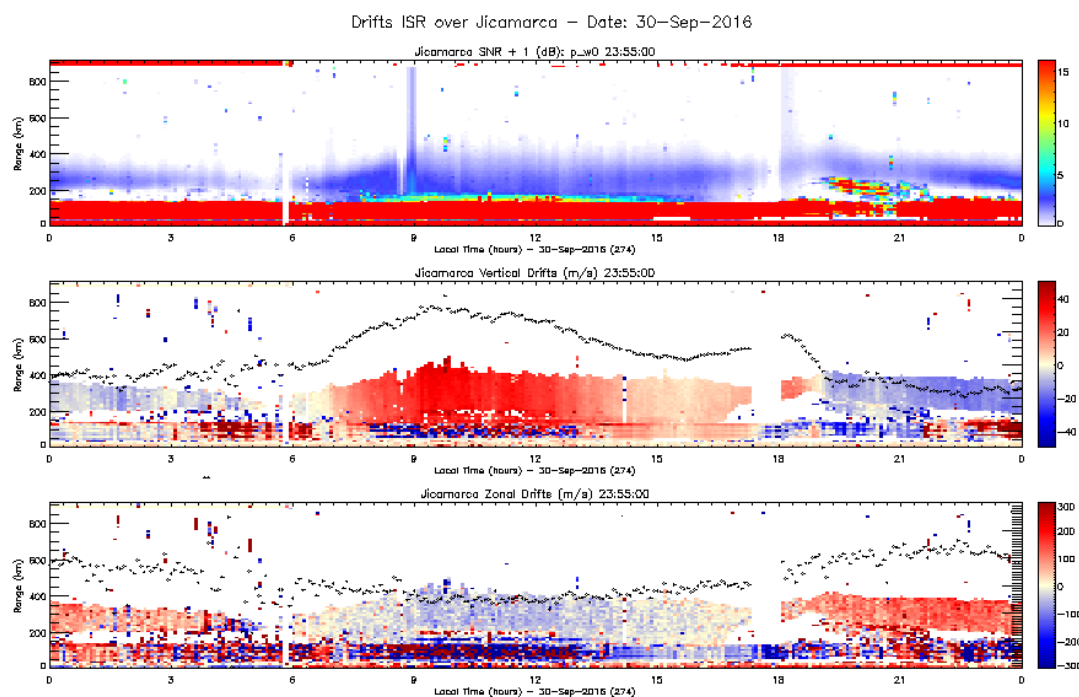


Figure 3. RTI EW_DRIFT 2016-09-30



Batch name: EW_Drifts_29set2016

Figure 4. EW_DRIFT 2016-09-30

October 01:

_ 10 minutes cut due to blackout.

_ Small Spread F

_ % Operation/19h: 86.81

Log:

_ 30 Sep 05:30 Blackout.

Staff in charge

00-08: A. Valdez, 08-20 P. Condor, 20-0 A. Belleza.

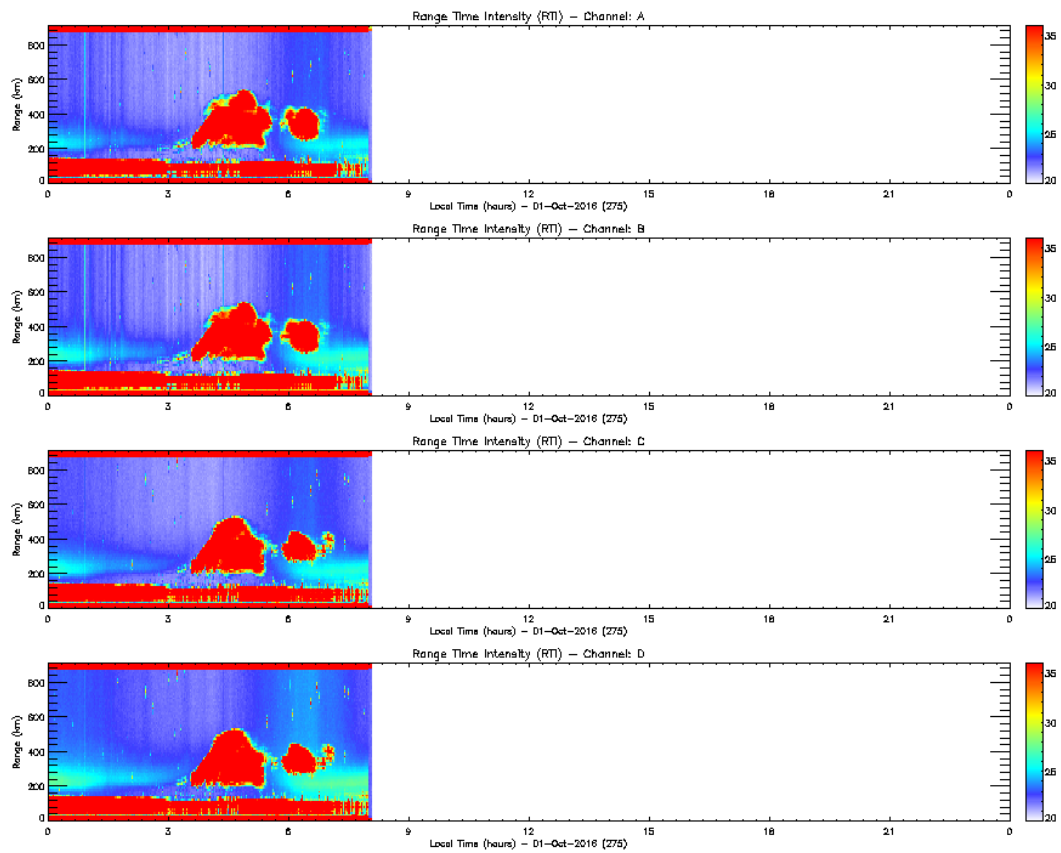


Figure 5. RTI EW_DRIFT 2016-10-01

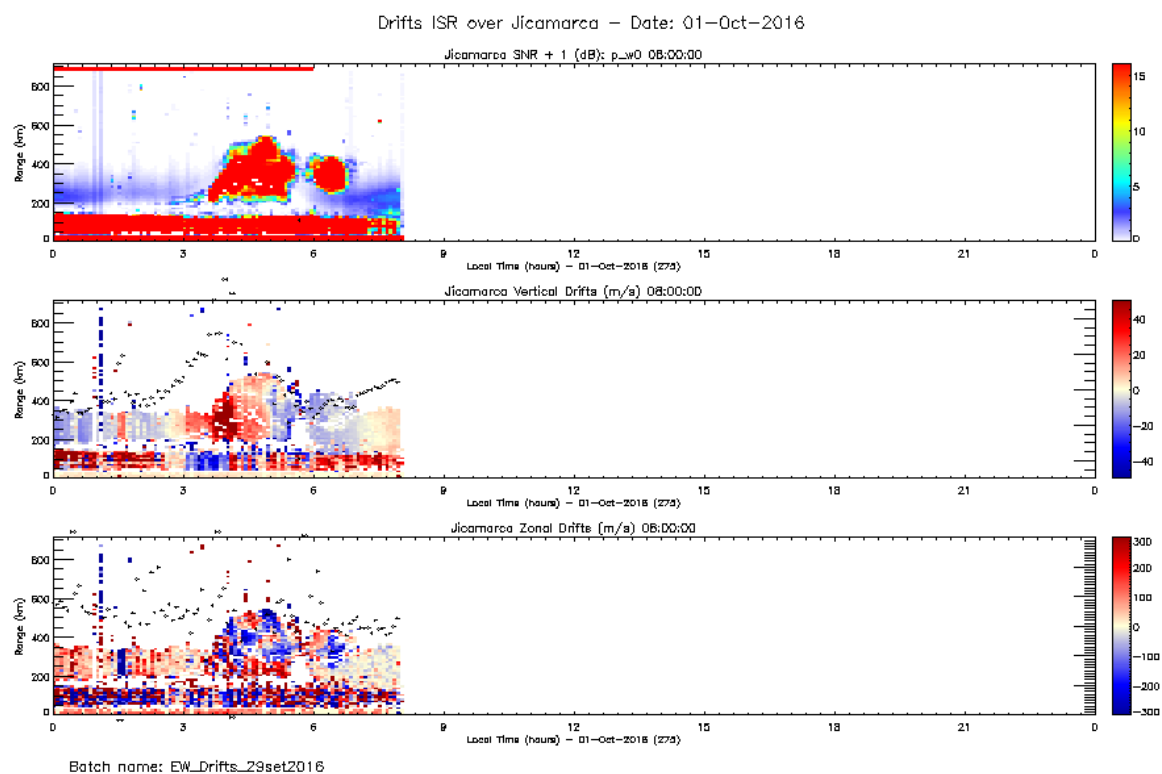


Figure 6. EW_DRIFT 2016-10-01

Conclusion:

- Interference is still present doesn't allow to do a correct estimation of the drifts.
- We have observed one of the interference is 50 MHz, it was due to RF Beacon controlled by us, this has been corrected on October 6 2016.

Annex:

Sky noise for October 01, 2016:

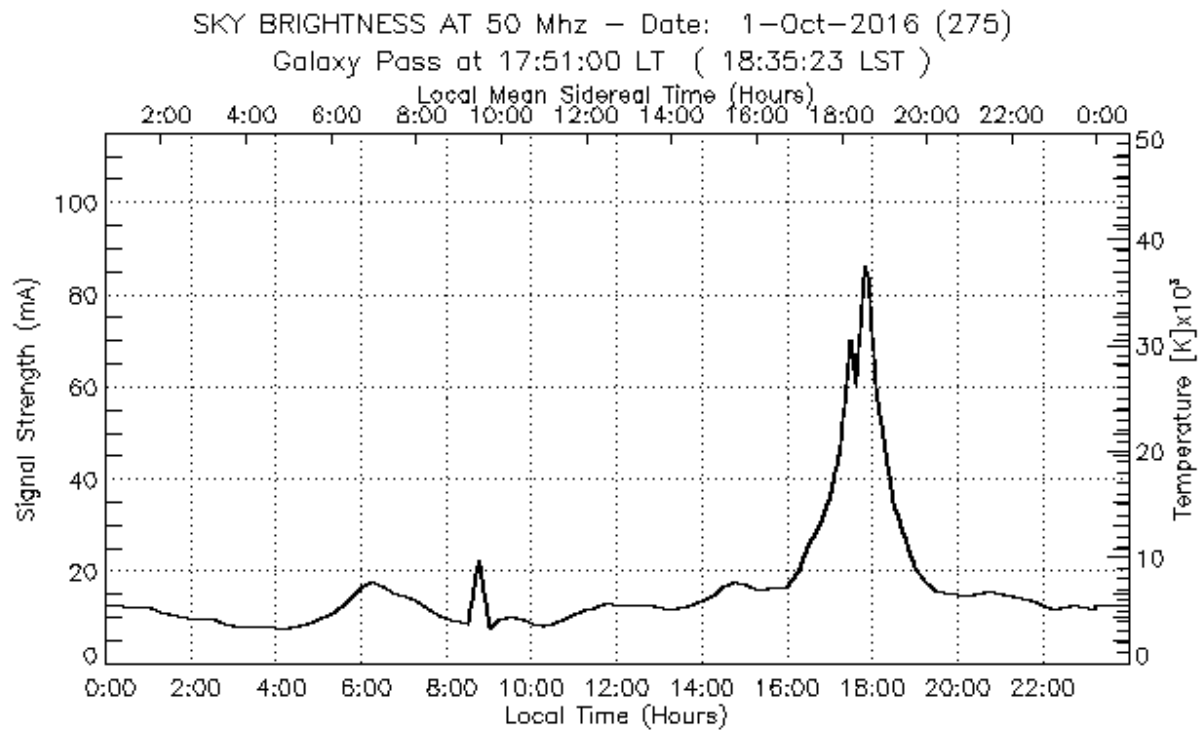


Figure 7. Sky noise.

Antenna pattern

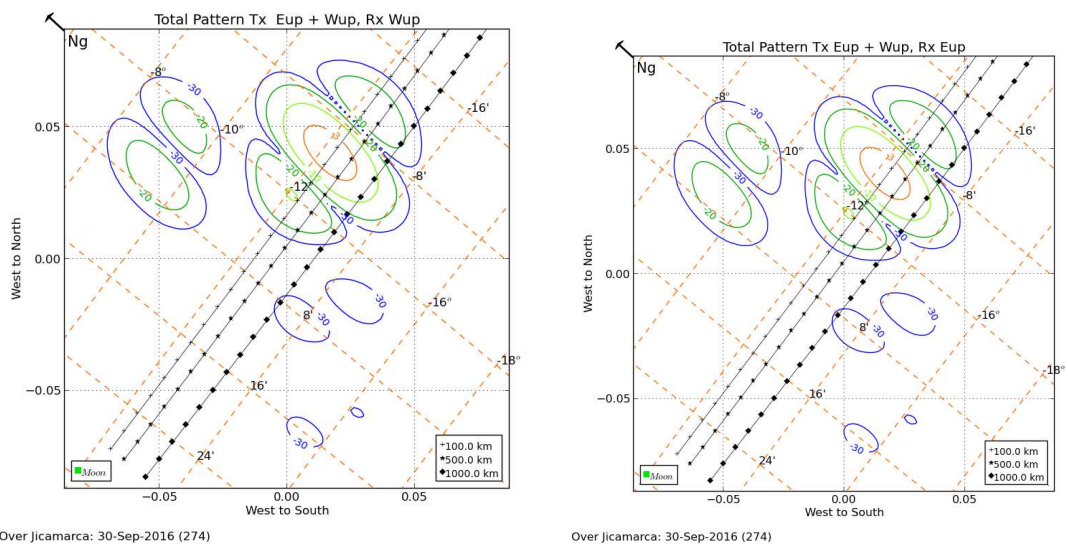
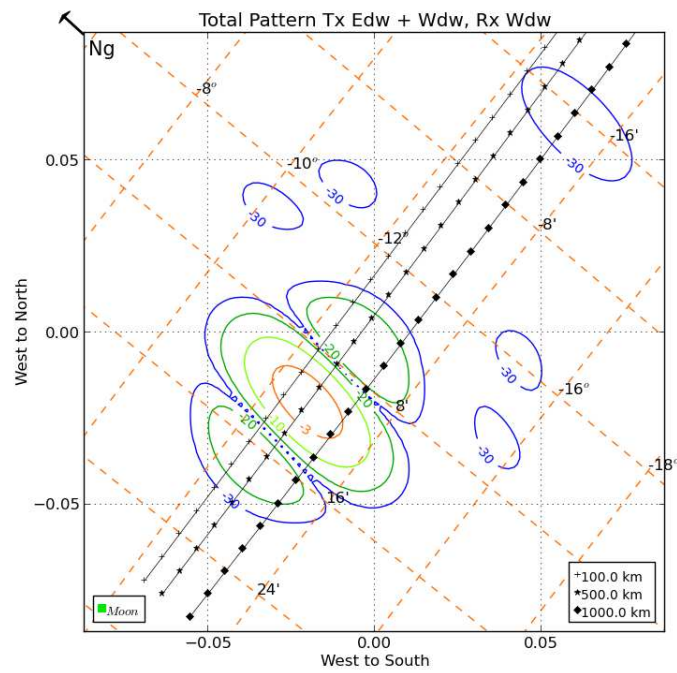
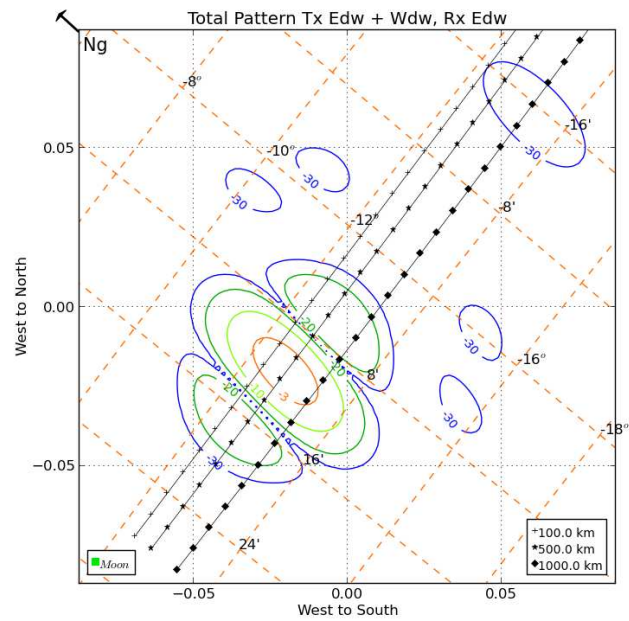


Figure 7. Antennas pattern EW_Drifts: Ch A and Ch B.



Over Jicamarca: 30-Sep-2016 (274)



Over Jicamarca: 30-Sep-2016 (274)

Figure 8. EW_Drifts: Ch C and Ch D.